

PLACES OF THE ČAPEK SIBLINGS' CHILDHOOD AND STUDENT YEARS

THE KLADSKO BORDERLAND

Come wander with us through the breathtaking landscape of the Kladsko Borderland and listen to the captivating tales of meandering rivers, deep ravines, mysterious labyrinths, and gorges. Discover the story of renaissance and baroque towns, unique architectural monuments, and enigmatic military fortresses. The Kladsko Borderland is a region marked forever by the legacy of the Čapek siblings.



ITINERARY

DAY 1

PRAHA - MALÉ SVATOŇOVICE (ÚPICE)

TRANSPORT OPTIONS – ARRIVAL:

BY CAR: Prague – Malé Svatoňovice – 161 km / 2 hours - Departure from Prague around 9:00 – Arrival in Malé Svatoňovice at 11:00

BY TRAIN: Prague – Malé Svatoňovice – 2 hours 50 minutes - Departure from Prague at 8:10 – Arrival in Malé Svatoňovice at 11:00

* Dining options in the area are limited — only light refreshments are available for purchase. During opening hours (in the afternoon), you can visit the local café, symbolically named [Dášeňka Café](#). If you are traveling by car, you can find [Restaurant U Bulánka](#) in nearby Batňovice (about a 5-minute drive), offering traditional Czech cuisine.

* Luggage can be stored at the information center.

* We recommend bringing cash, as it is the only accepted form of payment at the museum.

* If interested and time permits, you can also visit Úpice, a nearby town where the Čapek family lived for several years after Karel's birth. The house (now home to the Czech Police) is open to visitors upon ringing the bell. The Municipal Museum in Úpice features an exhibition dedicated to the life of the Čapek family.

[THE ČAPEK BROTHERS MUSEUM](#) (approx. 2 hours)

The first stop on the journey following the Čapek family leads to [Malé Svatoňovice](#), where you can visit the Čapek Brothers Museum, located in the birthplace of Karel Čapek. The exhibition will get you familiarized with the life and work of both brothers, showcasing their literary and theatrical achievements. A unique highlight of the collection is a robot gifted by PEN Club, which, upon closer inspection, reveals a remarkable resemblance to Karel Čapek himself.

You can also take some time to explore the surrounding area. Relax in the park In the town square, where you'll find interactive panels themed around the Čapek brothers' fairy-tale creations. Nearby, you can refresh yourself at the local spring, whose water never freezes and is said to have healing properties. In the past, traditional pilgrimages were held here—Karel's mother once offered wax breasts at the spring as a symbolic sacrifice for her son's healthy lungs.



MALÉ SVATOŇOVICE – NÁCHOD

TRANSPORT OPTIONS – TRANSFER:

BY CAR: Malé Svatoňovice – Náchod – 20 km / 30 minutes - Departure from Malé Svatoňovice around 13:00 – Arrival in Náchod at 13:30

BY TRAIN: Malé Svatoňovice – Náchod (transfer at Starkoč) – 1 hour - Departure from Malé Svatoňovice at 13:01 – Arrival in Náchod at 13:56

BY TAXI: A taxi can be arranged with the help of museum or information center staff.

ACCOMMODATION OPTIONS

The hotel called [U Beránka](#)

The Bor Guesthouse ([Penzion Bor](#)) (reaching this family guesthouse from Malé Svatoňovice requires transportation by car or taxi)

DINING AND REFRESHMENT OPTIONS

The hotel called [U Beránka](#)

[The Škvorecký Café](#)

The restaurant called [Port Artur](#) in Náchod (a small pub made famous by the works of Josef Škvorecký)

[EXHIBITIONS OF JAN LETZEL AND JOSEF ŠKVORECKÝ IN THE COMMUNITY HOUSE](#) (approx. 30 minutes)

The Josef Škvorecký exhibition introduces visitors to his life, literary career, and the atmosphere of his Toronto study. The Jan Letzel installation features photographs, personal items, and fragments of stones from the Hiroshima Atomic Dome, which he designed. The exhibitions also include an audiovisual room showing documentaries about both figures.

[THE NÁCHOD CASTLE](#) (approx. 2 hours)

The castle with its five courtyards forms an unmistakable landmark of the town of Náchod. The story of the castle began in the 13th century, when a fortress once stood on the site. Today, it offers several guided tour routes showcasing its rich history and architecture.

[CASTLE HILL](#) (approx. 1 hour)

The newly renovated Castle Hill offers unique panoramic views of the town of Náchod.



DAY 2

NÁCHOD – HRONOV

TRANSPORT OPTIONS – TRANSFER:

[BY CAR](#): Náchod – Hronov – 8 km / 20 minutes - Departure from Náchod around 9:00 – Arrival in Hronov at 9:20

[BY TRAIN](#): Náchod – Hronov – approx. 10 minutes - Departure from Náchod at 9:00 – Arrival in Hronov at 9:08

[BY BUS](#): Náchod – Hronov – approx. 15 minutes - Departure from Náchod at 8:55 – Arrival in Hronov at 9:10

[BY TAXI](#): A taxi can be arranged with the help of hotel reception or information center staff.

DINING AND REFRESHMENT OPTIONS

Under the Angel's Wings Café ([Café Pod křídly anděla](#))

[Stella](#) pizzeria

[Pizzeria Stella](#)

* We recommend bringing cash, as it is the only accepted form of payment at The Čapek Mill.

[THE ČAPEK MILL](#) (approx. 30 minutes)

On the second day, the journey continues to Hronov. The Čapek siblings — Helena, Karel, and Josef — spent their holidays in this mill. The mill has been renovated and opened to the public since 2022.

Visitors can explore an exhibition dedicated to the Čapek siblings, which includes the original hearth where the children used to play and sleep when they were young.

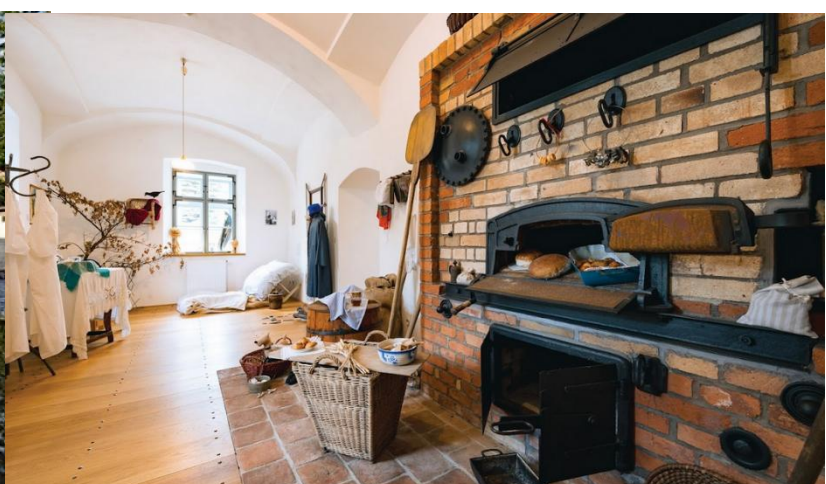
[THE DOG CALLED VOŘÍŠEK TRAIL AND MEDITATION PARK](#) (approx. 1 hour)

From Čapek's Mill, follow The Dog Called Voříšek Trail, a forest path lined with milestones depicting the dog hero Voříšek from the book Nine Fairy Tales. You can return along the same route. You'll find a meditation park near the catholic church, a tranquil spot perfect for reflection. Among other things, it also contains the grave of the Čapek siblings' grandfather, Karel Novotný, the miller of Čapek's Mill.

The town of Hronov is known as the mecca of Czech amateur theatre, as shown by the long-running International Festival of Amateur Theatre, whose history dates back to before World War I.

You can also visit the Alois Jirásek Park, named after the renowned Czech writer and native of Hronov, where healing mineral springs can be found.

* If you enjoy walking, the trail continues to the village of Vysoká Srbská, where you can climb a new [lookout tower](#) offering stunning panoramic views of the surrounding countryside.



HRONOV - PRAHA

TRANSPORT OPTIONS – DEPARTURE:

[BY CAR](#): Hronov – Prague – 160 km / 2 hours - Departure from Hronov around 12:00 – Arrival in Prague at 14:00

[BY TRAIN](#): Hronov – Prague – 2 hours 52 minutes - Departure from Hronov at 12:50 – Arrival in Prague at 15:42

[BY BUS](#): Hronov – Prague – 3 hours 23 minutes - Departure from Hronov at 10:47 – Arrival in Prague at 14:10

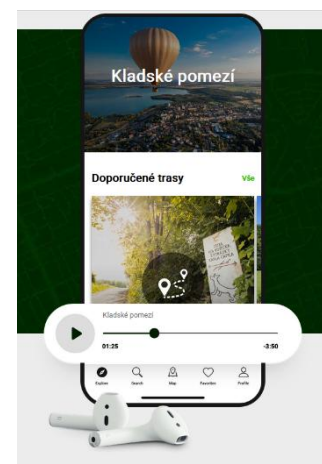
BULLET-POINT ITINERARY

DAY 1

- 8:10am or 9:00am / 11:00am – arrival Prague - Malé Svatoňovice
- 11:00am – 1:00pm – Malé Svatoňovice: museum, spring, town square, park
- 1:00pm or 1:30pm / 1:56pm – transfer Malé Svatoňovice - Náchod
- 2:00pm – check-in at selected accommodation
- 3:00pm – Náchod: Community Hall, Náchod Castle, Castle Hill

DAY 2

- 8:45am – check-out
- 9:00am or 9:08am / 9:20am – transfer Náchod – Hronov
- 9:30am or 10:47am / 12:00pm – Hronov – Čapek's Mill, The Dog Called Voříšek Trail, meditation park
- 10:47am or 12:00pm or 12:50pm / 2:00pm or 2:10pm or 3:42pm – departure Hronov – Prague



For more information:

<https://karelcapek.cz/>

<https://karelcapek.cz/en>

